



Gasdermin C Polyclonal Antibody

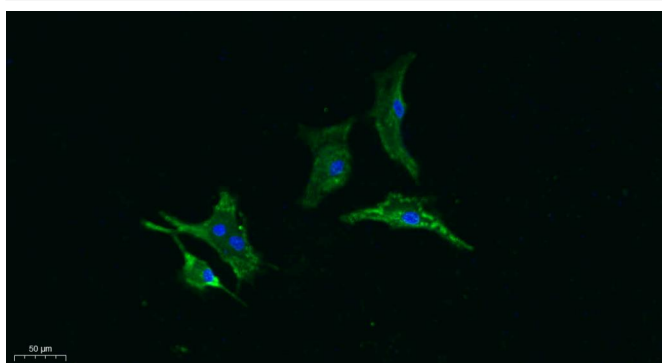
Catalog No	YP-Ab-00412
Isotype	IgG
Reactivity	Human;Rat;Mouse;
Applications	WB IF;ELISA
Gene Name	GSDMC
Protein Name	Gasdermin-C
Immunogen	The antiserum was produced against synthesized peptide derived from human GSDMC. AA range:109-158
Specificity	Gasdermin C Polyclonal Antibody detects endogenous levels of Gasdermin C protein.
Formulation	Liquid in PBS containing 50% glycerol, 0.5% BSA and 0.02% sodium azide.
Source	Polyclonal, Rabbit,IgG
Purification	The antibody was affinity-purified from rabbit antiserum by affinity-chromatography using epitope-specific immunogen.
Dilution	WB 1:500-2000 IF 1:100-300 ELISA 1:5000-20000 Not yet tested in other applications.
Concentration	1 mg/ml
Purity	≥90%
Storage Stability	-20°C/1 year
Synonyms	GSDMC; MLZE; Gasdermin-C; Melanoma-derived leucine zipper-containing extranuclear factor
Observed Band	55kD
Cell Pathway	[Gasdermin-C]: Cytoplasm, cytosol .; [Gasdermin-C, N-terminal]: Cell membrane ; Multi-pass membrane protein .
Tissue Specificity	Expressed mainly in trachea and spleen (PubMed:11223543). In the esophagus, expressed in differentiating cells and probably in differentiated cells. Also detected in gastric epithelium (PubMed:19051310).
Function	caution:Despite its name, it is unclear if this protein contains a functional leucine zipper.,similarity:Belongs to the gasdermin family.,tissue specificity:Expressed primarily in trachea and spleen.,
Background	caution:Despite its name, it is unclear if this protein contains a functional leucine zipper.,similarity:Belongs to the gasdermin family.,tissue specificity:Expressed primarily in trachea and spleen.,
matters needing attention	Avoid repeated freezing and thawing!



Usage suggestions

This product can be used in immunological reaction related experiments. For more information, please consult technical personnel.

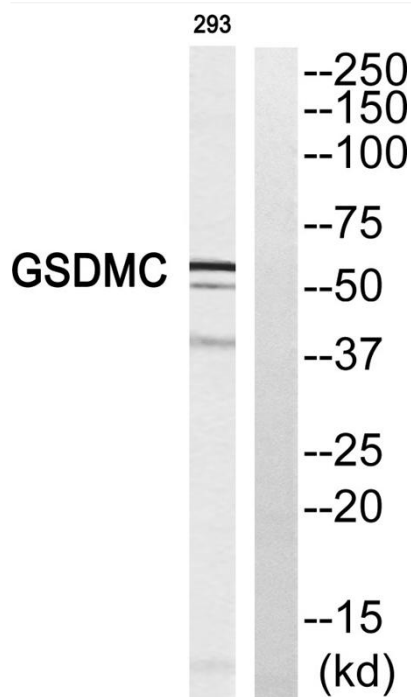
Products Images



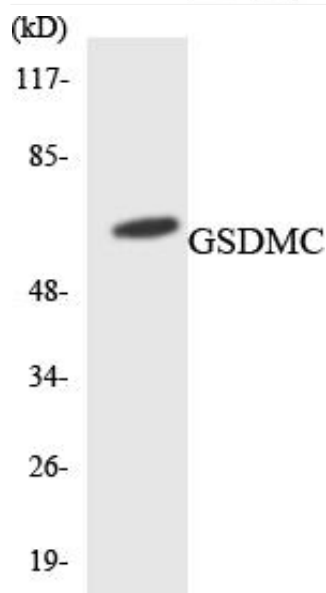
Immunofluorescence analysis of A549. 1,primary Antibody was diluted at 1:200(4°C overnight). 2, Goat Anti Rabbit IgG (H&L) - Alexa Fluor 488 Secondary antibody was diluted at 1:1000(room temperature, 50min).3, Picture B: DAPI(blue) 10min.



Western Blot analysis of various cells using Gasdermin C Polyclonal Antibody diluted at 1:500



Western blot analysis of GSDMC Antibody. The lane on the right is blocked with the GSDMC peptide.



Western blot analysis of the lysates from HepG2 cells using GSDMC antibody.